



RV SANITARY

INSTANTANEOUS GAS WATER HEATER

FOGATTI



FOGATTI heater is designed specially for RV hot water system, and the whole operating process is controlled by its microcomputer intelligent control system, to ensure continuous supply of constant temperature water.

The multi-safety devices such as overheating, anti-freezing, flame out, dry-burning, water overpressure protection, are monitored by the microcomputer intelligent control system so that the heater will be shut down immediately in case of any malfunction to ensure the safety.

- Low water pressure startup, suitable for RV pump and water flow system.
- Speed changing and wind resistance function: When there is a blockage of the flue or the exhaust is blocked, the built-in microcomputer system will increase the running speed of the fan and eliminate the generation of harmful gases.
- Water and gas linkage control: When the water supply is interrupted or the water outlet valve is closed, the water heater will automatically stop the combustion and shut down.

- No preheating needed, always enjoy a steady hot water.
- Automatic pulse ignition, accurate temperature control.
- Frost protection function: When the temperature of the water pipe in the water heater is lower than $6\pm 1^{\circ}\text{C}$ ($43^{\circ}\text{F}\pm 2^{\circ}\text{F}$), the machine will start ignition and run with a certain load and automatically shut down after running for 5 seconds; When the water temperature reaches $32\pm 1^{\circ}\text{C}$ ($90^{\circ}\text{F}\pm 2^{\circ}\text{F}$) in 2 seconds, it will shut down automatically.
- Fault auto-diagnosis and fault code display function.
- ETL certification.
- SAI certification.
- Water Mark certification.

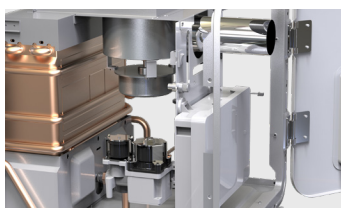


Type	FS06B1
Gas type	Universal LPG
Input load	12kW
Nozzle quantity	6
Nozzle diameter	0.91mm
Ignition method	Automatic ignition
Max. working water pressure	0.8MPa
Min. working water pressure	0.1MPa
Nominal gas pressure	2.8kPa
Nominal manifold pressure	1.3kPa
Weight	11.5kg
Power supply	12VDC, <10amp
Water heating capacity	6L/min
Maximum water temp	51°C
Output load	10.8kW



NO PREHEATING SUFFICIENT HOT WATER AT ANY TIME

Automatic pulse Ignition Intelligent control for accurate temperature.



ELEGANT DESIGN AVANT-GRADE APPEARANCE

Embedded installation saving space. 360 degree secure door lock against driving bumps.



MULTI DEVICES TO ENSURE SAFETY

Overheating, Anti-freezing, Anti-block, Dry-burning protection, Water Overpressure protection, Flame out protection.



Distributed by

